



## HOW TO PAINT WALLS

**This is the most satisfying part of the job – where you get to see immediate results. We've put together some practical advice to help make painting walls as straightforward as possible.**

### THINK AHEAD

Plan when you're going to decorate, think about how many days you might need. Make sure you allow enough time to complete the job without having to stop and start. It's always a good idea to allow extra time for unforeseen happenings!

### KEEP IT TIDY

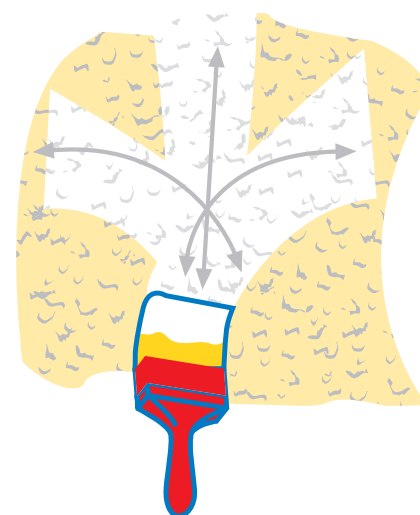
Before you start painting it's a good idea to cover extension roofs and porches and the ground below your work area. Protect downpipes from paint splashes by wrapping with newspaper.

### APPLICATION

You can use a brush or a roller to apply Sandtex® Masonry Paint

#### Using a brush

- Use a brush recommended for masonry paint, 100mm (4in) or 150mm (6in), with coarse bristles. Ensure the bristles are dry and clean.
- Dip up to one-third of the bristles in the paint to load the brush.
- Start at the top of the wall, applying the paint in all directions to get an even coating.
- On textured surfaces, use a stippling action, with the brush at right angles to the wall so you're using the ends of the bristles.
- If you splash doors or windows with masonry paint, remove it with a damp cloth.
- If you're using **Sandtex® Fine Textured or Ultra Smooth Masonry Paint**, two coats are suggested for best results, as the initial coat can absorb into the masonry surface and could be patchy. The second coat will give an even coverage and also be more durable. **Sandtex® One Coat Ultra Smooth Masonry Paint** will give good coverage with just one single application.



*Apply paint in all directions to get an even coating.*

*Continued on page 2*



## Using a roller

- A roller will cover walls quickly and evenly.
- You can work faster with a long pile roller than with a paintbrush, but a roller tray and a ladder can be a tricky combination. Sometimes you can get round the problem with a long-handled roller.
- To load the roller, rock it backwards and forwards in the paint tray, pushing it up to the top of the slope to remove excess paint.
- Apply in criss-cross strokes to the wall, ensuring a smooth start and finish to each stroke. Removing the roller suddenly may cause splashes.

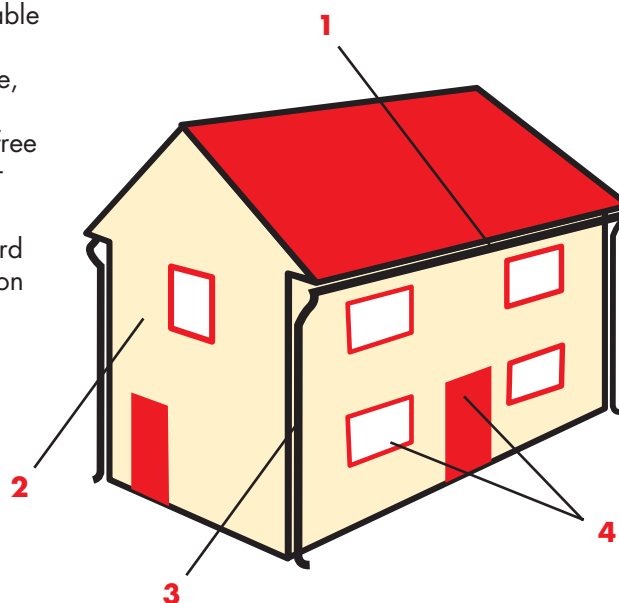
Spraying Sandtex® Masonry Paint is not recommended as spray painting outside could prove difficult to control and would not ensure an even coverage.



Apply paint in criss-cross strokes.

## ORDER OF PAINTING A HOUSE

1. Do the gutter fascias, gutters and eaves.
2. Next, do the walls. Start from the top and paint in manageable sections using windows, or drainpipes as borders. Work across each section doing the top first, then the middle, then the bottom. Follow the sun across the house to ensure that surfaces are free from dew, but don't paint in direct sunlight as it might blister the paint.
3. Then do the guttering downpipes, using a piece of cardboard as a shield behind the pipes to make sure paint doesn't go on the walls.
4. Paint the windows and doors.



Order of painting a house

PaintTalk

**NEED ADVICE?**

Call Sandtex® PaintTalk on **01 8164400**